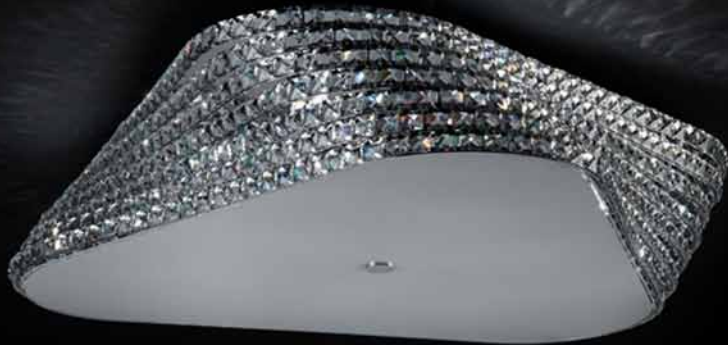


zuma
line



LIGHTING
becomes
part of the
room

Spis treści



Antarctica 2



Chandelier 9



Galileo 14



Mercury 19



Knight 24



Monaco 31



Pavo 37



Quadrate 44



Spirit 52



Tiara 58



Windsor 64



Antenne 4



Concept 10



Grace 15



Tornado 20



Lakszmi 26



Moon 32



Perle 38



Delta 3 45



Sydney 54



Tripod 60



Artemida 5



Section 10



Grace II 16



Innervation 21



Libra 27



Musca 33



Pico 40



Serenio 46



Tango 55



Tucana 61



Babylon 6



Crystal 11



Hebe 17



Jasmine 22



Mesh 29



Parthenon 34



Pop 41



Simple 48



Tenda 56



Virgo 62



Champagne 7



Flat 13



Impress 18



Jewellery 23



Mitra 30



Pasion 35



Rea 43



Souffle 49



Thea 57



Waterfal 63

Antarctica



P0174-10A – pendant lamp

💡 10*G9 40W INCLUDED

⬆️ ↗️ 320 mm, ↔ 720 mm, ⬆️ 1430 mm

🔊 ↗️ 320 mm, ↔ 720 mm, ⬆️ 190 mm



C0174-05E – pendant lamp

💡 5*G9 40W INCLUDED

⬆️ ↗️ 420 mm, ↔ 420 mm, ⬆️ 150 mm

🔊 ↗️ 420 mm, ↔ 420 mm, ⬆️ 150 mm



C0174-09E – ceiling lamp

💡 9*G9 40W INCLUDED

⬆️ ↗️ 530 mm, ↔ 530 mm, ⬆️ 150 mm

🔊 ↗️ 530 mm, ↔ 530 mm, ⬆️ 150 mm

K9 CLEAR CRYSTAL IN CHROME STEEL | FROSTED GLASS



Antarctica

C0109-04A – ceiling lamp

💡 4*G9 42W INCLUDED

⬆️ Ø330 mm, ⬆️ 140 mm

🔊 Ø330 mm, ⬆️ 140 mm



P0109-04A – pendant lamp

💡 4*G9 42W INCLUDED

⬆️ Ø330 mm, ⬆️ 1400 mm

🔊 Ø330 mm, ⬆️ 130 cm



P0109-09A – pendant lamp

💡 9*G9 42W INCLUDED

⬆️ Ø530 mm, ⬆️ 1440 mm

🔊 Ø530 mm, ⬆️ 190 mm



P0109-06A-F4BC – pendant lamp BLACK

💡 6*G9 28W INCLUDED

⬆️ Ø400 mm, ⬆️ 1440 mm

🔊 Ø400 mm, ⬆️ 200 mm



C0109-06A-F4BC – ceiling lamp BLACK

💡 6*G9 42W INCLUDED

⬆️ Ø400 mm, ⬆️ 160 mm

🔊 Ø400 mm, ⬆️ 150 mm



K9 CLEAR CRYSTAL IN CHROME STEEL | FROSTED GLASS
MACHINE PRESSED BLACK GLASS | CHROME | FROSTED GLASS



Antenne



TS-090522F-BK – floor lamp

- 💡 1*E27 MAX 60W NOT INCLUDED
- ⬆️ ↕️ 620 mm, ⬆️ 1200 mm
- 🔊 ↗️ 540 mm, ↔️ 540 mm, ⬆️ 380 mm

METAL BODY | GOLD INSIDE, BLACK SAND OUTSIDE SHADE



Artemida

US40 – pendant lamp

- 💡 8*G4 MAX 20W INCLUDED
- ⬆️ ↕️ 400 mm, ⬆️ 1200 mm
- 🔊 ↗️ 400 mm, ⬆️ 160 mm

US40L – pendant lamp

- 💡 10*G4 MAX 20W INCLUDED
- ⬆️ ↕️ 500 mm, ⬆️ 1200 mm
- 🔊 ↗️ 500 mm, ⬆️ 250 mm

T220 – table lamp

- 💡 4*E14 MAX 25W NOT INCLUDED
- ⬆️ ↕️ 360 mm, ⬆️ 640 mm
- 🔊 ↗️ 360 mm, ⬆️ 250 mm

F220 – floor lamp

- 💡 4*E14 MAX 25W NOT INCLUDED
- ⬆️ ↕️ 460 mm, ⬆️ 1750 mm
- 🔊 ↗️ 460 mm, ⬆️ 350 mm

SILVER THERAD SHADE | CHROME | K9 CLEAR CRYSTAL



Babylon



C0286-03S-F4AC – ceiling lamp

💡 3*G9 53W INCLUDED
⬆️ Ø440 mm, ⬆️ 160 mm
⬆️ Ø440 mm, ⬆️ 160 mm

C0286-06M-F4AC
6*G9 42W INCLUDED
⬆️ Ø550 mm, ⬆️ 160 mm
⬆️ Ø550 mm, ⬆️ 160 mm



C0286-09L-F4AC – ceiling lamp

💡 9*G9 42W INCLUDED
⬆️ Ø650 mm, ⬆️ 180 mm
⬆️ Ø650 mm, ⬆️ 180 mm

C0286-18X-F4AC
18*G9 28W INCLUDED
⬆️ Ø870 mm, ⬆️ 190 mm
⬆️ Ø870 mm, ⬆️ 160 mm



P0286-03S-F4AC – pendant lamp

💡 3*G9 53W INCLUDED
⬆️ Ø440 mm, ⬆️ 1370 mm
⬆️ Ø400 mm, ⬆️ 140 mm

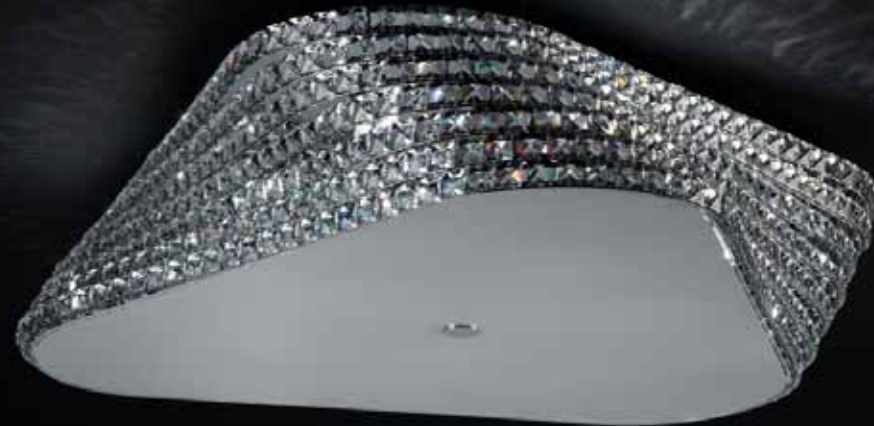
P0286-06M-F4AC
6*G9 42W INCLUDED
⬆️ Ø550 mm, ⬆️ 1370 mm
⬆️ Ø550 mm, ⬆️ 140 mm



P0286-09L-F4AC – pendant lamp

💡 9*G9 42W INCLUDED
⬆️ Ø650 mm, ⬆️ 1390 mm
⬆️ Ø650 mm, ⬆️ 160 mm

K9 CLEAR CRYSTAL | GLASS | CHROME



Champagne

MD2101A-3BL – pendant lamp BLACK

💡 3*E14 40W NOT INCLUDED
⬆️ Ø300 mm, ⬆️ 1800 mm
⬆️ Ø87 mm, ⬆️ 230 mm



MD2101A-3W – pendant lamp WHITE

💡 3*E14 40W NOT INCLUDED
⬆️ Ø300 mm, ⬆️ 1800 mm
⬆️ Ø87 mm, ⬆️ 230 mm



MD2101A-5BL – pendant lamp BLACK

💡 5*E14 40W NOT INCLUDED
⬆️ Ø340 mm, ⬆️ 2400 mm
⬆️ Ø87 mm, ⬆️ 230 mm



MD2101A-5W – pendant lamp WHITE

💡 5*E14 40W NOT INCLUDED
⬆️ Ø340 mm, ⬆️ 2400 mm
⬆️ Ø87 mm, ⬆️ 230 mm



WHITE OR BLACK GLASS | STAINLESS STEEL | CHROME



Champagne



MD2101B-3W – pendant lamp WHITE

- 💡 3*E14 40W NOT INCLUDED
- ▲ ↗ 60 mm, ↔ 615 mm, ↓ 1200 mm
- 🔊 Ø87 mm, ↓ 230 mm



MD2101B-3BL – pendant lamp BLACK

- 💡 3*E14 40W NOT INCLUDED
- ▲ ↗ 60 mm, ↔ 615 mm, ↓ 1200 mm
- 🔊 Ø87 mm, ↓ 230 mm



MD2101-1W – pendant lamp WHITE

- 💡 1*E14 40W NOT INCLUDED
- ▲ Ø130 mm, ↓ 1200 mm
- 🔊 Ø87 mm, ↓ 230 mm



MD2101-1BL – pendant lamp BLACK

- 💡 1*E14 40W NOT INCLUDED
- ▲ Ø130 mm, ↓ 1200 mm
- 🔊 Ø87 mm, ↓ 230 mm

WHITE OR BLACK GLASS | STAINLESS STEEL | CHROME



Chandelier



MC2070-5BL – pendant lamp

- 💡 1*G9 40W INCLUDED/
5*E14 25W NOT INCLUDED
- ▲ Ø690 mm, ↓ 510 mm
- 🔊 ↗ 150 mm, ↔ 150 mm, ↓ 160 mm



MC2070-8BL – pendant lamp

- 💡 1*G9 40W INCLUDED/
8*E14 25W NOT INCLUDED
- ▲ Ø950 mm, ↓ 680 mm
- 🔊 ↗ 150 mm, ↔ 150 mm, ↓ 160 mm



MB2070-1BL – wall lamp

- 💡 1*E14 25W NOT INCLUDED
- ▲ ↗ 290 mm, ↔ 150 mm, ↓ 340 mm
- 🔊 ↗ 150 mm, ↔ 150 mm, ↓ 160 mm



WHITE AND BLACK GLASS | BLACK FABRIC | CHROM

Concept



1235-BG – wall lamp BLACK

- 💡 1*G9 20W INCLUDED
- ▲ ↗ 90 mm, ↔ 160 mm, ↓ 80 mm
- 🔊 ↗ 90 mm, ↔ 160 mm, ↓ 80 mm



1235-WG – wall lamp WHITE

- 💡 1*G9 20W INCLUDED
- ▲ ↗ 90 mm, ↔ 160 mm, ↓ 80 mm
- 🔊 ↗ 90 mm, ↔ 160 mm, ↓ 80 mm

Section



1005-BG – wall lamp BLACK

- 💡 1*G9 40W INCLUDED
- ▲ ↗ 108 mm, ↔ 200 mm, ↓ 250 mm
- 🔊 ↗ 108 mm, ↔ 200 mm, ↓ 250 mm



1005-WG – wall lamp WHITE

- 💡 G9 1*40W BULBS INCLUDED
- ▲ ↗ 108 mm, ↔ 200 mm, ↓ 250 mm
- 🔊 ↗ 108 mm, ↔ 200 mm, ↓ 250 mm

BLACK AND GOLD OR WHITE AND GOLD COLOR SHADE |
ALUMINIUM



Crystal

T0076-03E – table lamp

- 💡 3*G9 MAX 40W INCLUDED
- ▲ Ø280 mm, ↓ 420 mm
- 🔊 Ø280 mm, ↓ 160 mm

F0076-04A – floor lamp

- 💡 4*G9 MAX 40W INCLUDED
- ▲ Ø400 mm, ↓ 1580 mm
- 🔊 Ø400 mm, ↓ 220 mm

C0076-05L – ceiling lamp

- 💡 5*G9 MAX 40W INCLUDED
- ▲ Ø400 mm, ↓ 220 mm
- 🔊 Ø400 mm, ↓ 220 mm

C0076-06X – ceiling lamp

- 💡 6*G9 MAX 40W INCLUDED
- ▲ Ø500 mm, ↓ 220 mm
- 🔊 Ø500 mm, ↓ 220 mm



CLEAR GLASS PLATING | CLEAR CRYSTAL DROPS | CHROME

Crystal



P0076-03E – pendant lamp

- 3*G9 MAX 40W INCLUDED
- ▲ Ø280 mm, ↓ 1410 mm
- Ø280 mm, ↓ 160 mm



P0076-05L – pendant lamp

- 5*G9 MAX 40W INCLUDED
- ▲ Ø400 mm, ↓ 1450 mm
- Ø400 mm, ↓ 220 mm



P0076-06X – pendant lamp

- 6*G9 MAX 40W INCLUDED
- ▲ Ø500 mm, ↓ 1450 mm
- Ø500 mm, ↓ 220 cm



P0076-03R – pendant lamp

- 3*G9 MAX 40W INCLUDED
- ▲ Ø700 mm, ↓ 1430 mm
- Ø200 mm, ↓ 190 mm



CLEAR GLASS PLATING | CLEAR CRYSTAL DROPS | CHROME

Flat

3253 – pendant lamp

- 2*E27 40W NOT INCLUDED
- ▲ ↗ 135 mm, ↔ 740 mm, ↓ 226 mm
- ↗ 135 mm, ↔ 270 mm, ↓ 140 mm



3254 – pendant lamp

- 3*E27 40W NOT INCLUDED
- ▲ ↗ 135 mm, ↔ 1130 mm, ↓ 1440 mm
- ↗ 135 mm, ↔ 270 mm, ↓ 140 mm



1251 – wall lamp

- 1*E27 40W NOT INCLUDED
- ▲ ↗ 170 mm, ↔ 270 mm, ↓ 243 mm
- ↗ 170 mm, ↔ 270 mm, ↓ 140 mm



5249 – floor lamp

- 1*E27 60W NOT INCLUDED
- ▲ ↗ 210 mm, ↔ 395 mm, ↓ 1565 mm
- ↗ 210 mm, ↔ 395 mm, ↓ 230 mm



CREAM BAMBOO SHADE | STAINLESS STEEL POLISHED BODY

Galileo



TS-120628F-CHBK – floor lamp

- 💡 1*E27 60W NOT INCLUDED
- ⬆️ ↕️ 640 mm, ⬆️ 1650 mm
- 🔊 ↕️ 600 mm, ⬆️ 310 mm



BLACK FABRIC SHADE | CHROME

Grace

W0248-01A – wall lamp

- 💡 1*G4 35W MAX INCLUDED
- ⬆️ ↕️ 240 mm, ↔️ 120 mm, ⬆️ 500 mm
- 🔊 ↕️ 120 mm, ⬆️ 117 mm



P0249-01A – pendant lamp

- 💡 1*G9 35W MAX INCLUDED
- ⬆️ ↕️ 172 mm, ⬆️ 1630 mm
- 🔊 ↕️ 172 mm, ⬆️ 170 mm



P0248-03B – pendant lamp

- 💡 3*G4 35W MAX INCLUDED
- ⬆️ ↕️ 330 mm, ⬆️ 1450 mm
- 🔊 ↕️ 120 mm, ⬆️ 117 mm



MOUTH BLOWN OPAL GLASS WITH K9 CLEAR CRYSTAL | CHROME

Grace II



3338 – pendant lamp

- 💡 3*E14 40W NOT INCLUDED
- ⬆️ Ø635 mm, ⬇️ 250 mm
- 🔊 Ø160 mm, ⬇️ 130 mm



3339 – pendant lamp

- 💡 5*E14 40W NOT INCLUDED
- ⬆️ Ø695 mm, ⬇️ 250 mm
- 🔊 Ø160 mm, ⬇️ 130 mm



1341 – wall lamp

- 💡 1*E14 40W NOT INCLUDED
- ⬆️ ∠ 198 mm, ↔ 160 mm, ⬇️ 226 mm
- 🔊 Ø160 mm, ⬇️ 130 mm

CREAM BAMBOO SHADE | POLISHED STAINLESS STEEL BODY



Hebe

P0273-01A-B5AC – pendant lamp

- 💡 1*G4 35W INCLUDED
- ⬆️ Ø90 mm, ⬇️ 1390 mm
- 🔊 Ø90 mm, ⬇️ 210 mm



P0273-05H-B5AC – pendant lamp

- 💡 5*G4 20W INCLUDED
- ⬆️ ∠ 60 mm, ↔ 860 mm, ⬇️ 1460 mm
- 🔊 Ø90 mm, ⬇️ 210 mm



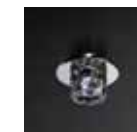
D0273-01B-F4AC – ceiling lamp

- 💡 1*3W LED INCLUDED
- ⬆️ Ø90 mm, ⬇️ 40 mm
- 🔊 Ø90 mm, ⬇️ 40 mm



D0273-01B-F4AP – ceiling lamp

- 💡 1*3W LED INCLUDED
- ⬆️ Ø90 mm, ⬇️ 40 mm
- 🔊 Ø90 mm, ⬇️ 40 mm



K9 CLEAR OR SMOKY CRYSTAL | MIRROR STAINLESS STEEL



Impress



1374 – wall lamp

💡 3*1W LED INCLUDED
 ▲ ↗ 216 mm, ↔ 320 mm, ⬆ 50 mm



1444 – wall lamp

💡 1*4.8W LED INCLUDED
 ▲ ↗ 214 mm, ↔ 400 mm, ⬆ 30 mm

STAINLESS STEEL POLISHED | NO SWITCH



Mercury

1384 – wall lamp

💡 1*3W LED INCLUDED
 ▲ ↗ 160 mm, ↔ 250 mm, ⬆ 25 mm



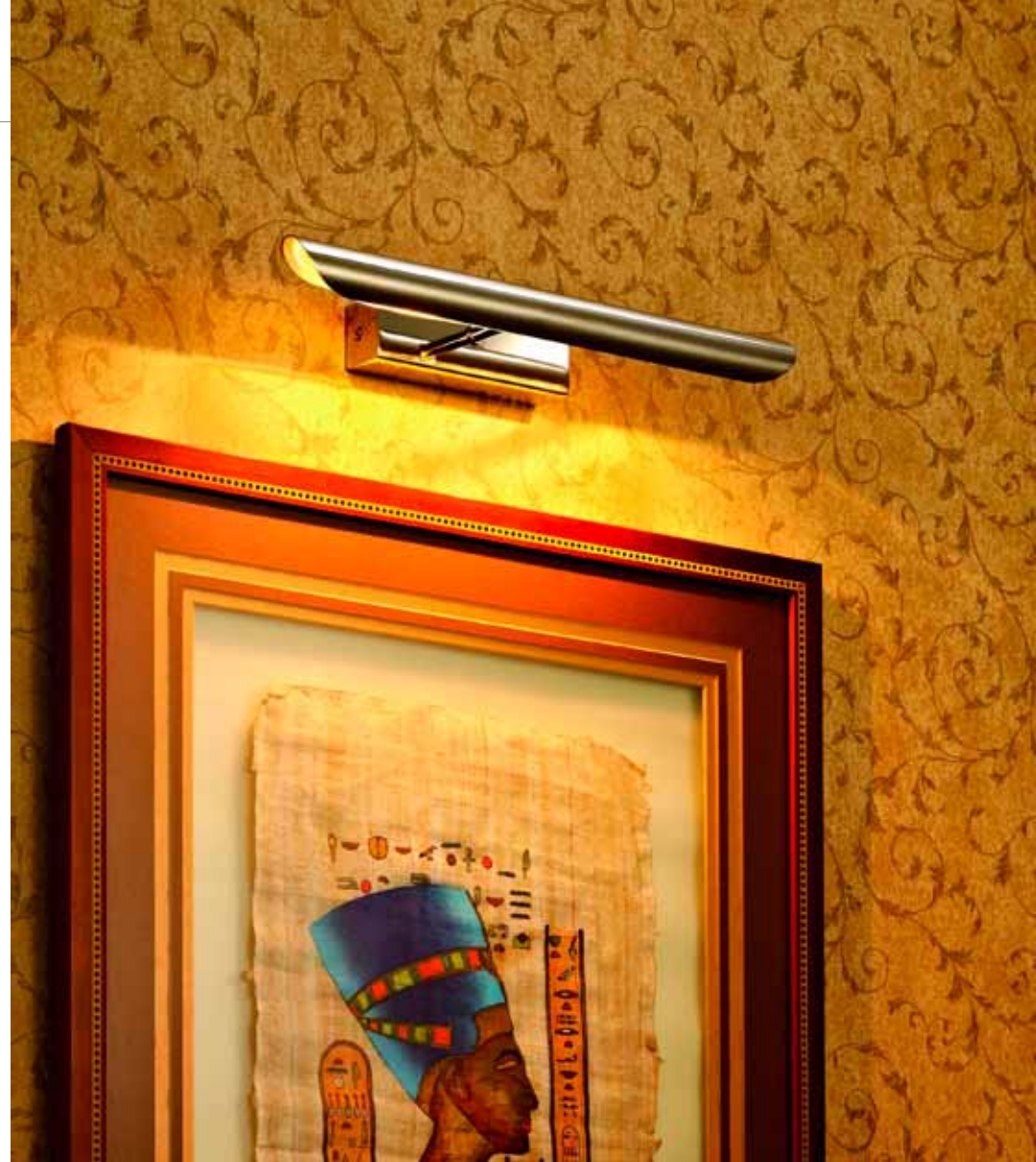
STAINLESS STEEL POLISHED | NO SWITCH

Tornado



1376 – wall lamp
 2*1W LED INCLUDED
 98 mm, ↔ 300 mm

STAINLESS STEEL POLISHED | NO SWITCH



Innervation

1441H – wall lamp
 1*T5 24W INCLUDED
 65 mm, ↔ 600 mm, 55 mm
 64 mm, ↔ 594 mm, 55 mm



1442H – wall lamp
 1*T5 39W INCLUDED
 65 mm, ↔ 900 mm, 55 mm
 64 mm, ↔ 594 mm, 55 mm



ACRYL SHADE | STAINLESS STEEL BODY | IP44

Jasmine



w0246-01A-B5AC – wall lamp CLEAR

- 💡 1*G9 42W INCLUDED
- ▲ ↗ 90 mm, ↔ 255 mm, ↓ 130 mm
- 🔊 ↗ 65 mm, ↔ 255 mm, ↓ 130 mm



W0246-01A-B5RL - wall lamp SMOKY

- 💡 1*G9 42W INCLUDED
- ▲ ↗ 90 mm, ↔ 255 mm, ↓ 130 mm
- 🔊 ↗ 65 mm, ↔ 255 mm, ↓ 130 mm



W0246-02A-B5AC - wall lamp CLEAR

- 💡 2*G9 42W INCLUDED
- ▲ ↗ 90 mm, ↔ 455 mm, ↓ 130 mm
- 🔊 ↗ 65 mm, ↔ 455 mm, ↓ 130 mm



W0246-02A-B5RL - wall lamp SMOKY

- 💡 2*G9 42W INCLUDED
- ▲ ↗ 90 mm, ↔ 455 mm, ↓ 130 mm
- 🔊 ↗ 65 mm, ↔ 455 mm, ↓ 130 mm

K9 CLEAR AND SMOKY CRYSTAL | MIRROR STAINLESS STEEL



Jewellery

P1550-03A-4FB3 – pendant lamp

- 💡 3*E27 60W/13W ENERGY NOT INCLUDED
- ▲ Ø620 mm, ↓ 1770 mm
- 🔊 Ø180 mm, ↓ 120 mm



P1550-05A-F4B3 – pendant lamp

- 💡 5*E27 60W/13W ENERGY NOT INCLUDED
- ▲ Ø740 mm, ↓ 1870 mm
- 🔊 Ø180 mm, ↓ 120 mm



W1550-01A-F4B3 – wall lamp

- 💡 1*E27 60W/13W ENERGY NOT INCLUDED
- ▲ ↗ 340 mm, ↔ 180 mm, ↓ 380 mm
- 🔊 Ø180 mm, ↓ 120 mm



CHOME & CRYSTAL

Knight



C0272-04M-S8AC – ceiling lamp RICE

💡 4*G9 42W INCLUDED
⬆️ Ø420 mm, ⬇️ 210 mm
⬆️ Ø420 mm, ⬇️ 210 mm



C0272-04M-Q3AC – ceiling lamp CHOCOLATE

💡 4*G9 42W INCLUDED
⬆️ Ø420 mm, ⬇️ 210 mm
⬆️ Ø420 mm, ⬇️ 210 mm



C0272-04M-Q2AC – ceiling lamp BLACK

💡 4*G9 42W INCLUDED
⬆️ Ø420 mm, ⬇️ 210 mm
⬆️ Ø420 mm, ⬇️ 210 mm



C0272-05L-H6AC – ceiling lamp SILVER

💡 4*G9 42W INCLUDED
⬆️ Ø420 mm, ⬇️ 210 mm
⬆️ Ø420 mm, ⬇️ 210 mm

C0272-05L-S8AC

💡 5*G9 42W INCLUDED
⬆️ Ø520 mm, ⬇️ 260 mm
⬆️ Ø520 mm, ⬇️ 260 mm

C0272-05L-Q3AC

💡 5*G9 42W INCLUDED
⬆️ Ø520 mm, ⬇️ 260 mm
⬆️ Ø520 mm, ⬇️ 260 mm

C0272-05L-Q2AC

💡 5*G9 42W INCLUDED
⬆️ Ø520 mm, ⬇️ 260 mm
⬆️ Ø520 mm, ⬇️ 260 mm

C0272-05M-H6AC

💡 5*G9 42W INCLUDED
⬆️ Ø520 mm, ⬇️ 260 mm
⬆️ Ø520 mm, ⬇️ 260 mm

POWDERED ALUMINUM SHADE IN RICE | CHOCOLATE | BLACK |
SILVER WITH K9 CLEAR CRYSTAL



Knight

P0272-04M-S8AC – pendant lamp RICE

💡 4*G9 42W INCLUDED
⬆️ Ø420 mm, ⬇️ 1480 mm
⬆️ Ø420 mm, ⬇️ 220 mm

P0272-04M-Q3AC – pendant lamp CHOCOLATE

💡 4*G9 42W INCLUDED
⬆️ Ø420 mm, ⬇️ 1480 mm
⬆️ Ø420 mm, ⬇️ 220 mm

P0272-04M-Q2AC – pendant lamp BLACK

💡 4*G9 42W INCLUDED
⬆️ Ø420 mm, ⬇️ 1480 mm
⬆️ Ø420 mm, ⬇️ 220 mm

P0272-04M-H6AC – pendant lamp SILVER

💡 4*G9 42W INCLUDED
⬆️ Ø420 mm, ⬇️ 1480 mm
⬆️ Ø420 mm, ⬇️ 220 mm

P0272-05L-S8AC

💡 5*G9 42W INCLUDED
⬆️ Ø520 mm, ⬇️ 1520 mm
⬆️ Ø520 mm, ⬇️ 270 mm

P0272-05L-Q3AC

💡 5*G9 42W INCLUDED
⬆️ Ø520 mm, ⬇️ 1520 mm
⬆️ Ø520 mm, ⬇️ 270 mm

P0272-05L-Q2AC

💡 5*G9 42W INCLUDED
⬆️ Ø520 mm, ⬇️ 1520 mm
⬆️ Ø520 mm, ⬇️ 270 mm

P0272-05L-H6AC

💡 5*G9 42W INCLUDED
⬆️ Ø520 mm, ⬇️ 1520 mm
⬆️ Ø520 mm, ⬇️ 270 mm



POWDERED ALUMINUM SHADE IN RICE | CHOCOLATE | BLACK |
SILVER WITH K9 CLEAR CRYSTAL



Lakszmi



MD2116-5 – pendant lamp

💡 5*E14 40W NOT INCLUDED
 ▲ ↗ 662 mm, ↔ 662 mm, ↓ 1200 mm
 📐 ↗ 120 mm, ↔ 120 mm, ↓ 160 mm



MD2116-8 – pendant lamp

💡 8*E14 40W NOT INCLUDED
 ▲ ↗ 772 mm, ↔ 772 mm, ↓ 1200 mm
 📐 ↗ 120 mm, ↔ 120 mm, ↓ 160 mm

WHITE GLASS | CHROME



Libra

MD2128-1W – pendant lamp WHITE

💡 1*E14 40W NOT INCLUDED
 ▲ ↗ 163 mm, ↔ 163 mm, ↓ 1200 mm
 📐 ↗ 163 mm, ↔ 163 mm, ↓ 170 mm

MD2128-1BL – pendant lamp BLACK

💡 1*E14 40W NOT INCLUDED
 ▲ ↗ 163 mm, ↔ 163 mm, ↓ 1200 mm
 📐 ↗ 163 mm, ↔ 163 mm, ↓ 170 mm

MD2128-1R – pendant lamp RED

💡 1*E14 40W NOT INCLUDED
 ▲ ↗ 163 mm, ↔ 163 mm, ↓ 1200 mm
 📐 ↗ 163 mm, ↔ 163 mm, ↓ 170 mm

MD2128B-3W – pendant lamp WHITE

💡 3*E14 40W NOT INCLUDED
 ▲ ↗ 163 mm, ↔ 843 mm, ↓ 1200 mm
 📐 ↗ 163 mm, ↔ 163 mm, ↓ 170 mm

MD2128B-3BL – pendant lamp BLACK

💡 3*E14 40W NOT INCLUDED
 ▲ ↗ 163 mm, ↔ 843 mm, ↓ 1200 mm
 📐 ↗ 163 mm, ↔ 163 mm, ↓ 170 mm

SHINY WHITE, BLACK OR RED GLASS | STAINLESS STEEL SHEET | CHROME



Libra



MD2128A-3R – pendant lamp RED

💡 3*E14 40W NOT INCLUDED
 ▲ ↗ 163 mm, ↔ 843 mm, ↓ 1200 mm
 📏 ↗ 163 mm, ↔ 163 mm, ↓ 170 mm



MD2128A-3W – pendant lamp WHITE

💡 3*E14 40W NOT INCLUDED
 ▲ ↗ 365 mm, ↔ 365 mm, ↓ 1200 mm
 📏 ↗ 163 mm, ↔ 163 mm, ↓ 170 mm



MD2128A-3BL – pendant lamp BLACK

💡 3*E14 40W NOT INCLUDED
 ▲ ↗ 365 mm, ↔ 365 mm, ↓ 1200 mm
 📏 ↗ 163 mm, ↔ 163 mm, ↓ 170 mm



MD2128A-3R – pendant lamp RED

💡 3*E14 40W NOT INCLUDED
 ▲ ↗ 365 mm, ↔ 365 mm, ↓ 1200 mm
 📏 ↗ 163 mm, ↔ 163 mm, ↓ 170 mm

SHINY WHITE, BLACK OR RED GLASS | STAINLESS STEEL SHEET | CHROME



Mesh

1578 Mesh II 650 – wall lamp

💡 2*T5 14W INCLUDED
 ▲ ↗ 50 mm, ↔ 490 mm, ↓ 650 mm



MIRROR | PULL SWITCH | STAINLESS STEEL POLISHED | IP44

Mitra



MD2098-6W – pendant lamp WHITE

- 💡 6*E14 40W NOT INCLUDED
- ▲ ↗ 420 mm, ↔ 420 mm, ↓ 1400 mm
- 🔊 ↗ 167 mm, ↔ 167 mm, ↓ 172 mm
- 🔊 ↗ 128 mm, ↔ 128 mm, ↓ 182 mm
- 🔊 ↗ 87 mm, ↔ 87 mm, ↓ 230 mm



MD2098-6BL – pendant lamp BLACK

- 💡 6*E14 40W NOT INCLUDED
- ▲ ↗ 420 mm, ↔ 420 mm, ↓ 1400 mm
- 🔊 ↗ 167 mm, ↔ 167 mm, ↓ 172 mm
- 🔊 ↗ 128 mm, ↔ 128 mm, ↓ 182 mm
- 🔊 ↗ 87 mm, ↔ 87 mm, ↓ 230 mm



MD2098-3W – pendant lamp WHITE

- 💡 3*E14 40W NOT INCLUDED
- ▲ ↗ 420 mm, ↔ 420 mm, ↓ 1400 mm
- 🔊 ↗ 167 mm, ↔ 167 mm, ↓ 172 mm
- 🔊 ↗ 128 mm, ↔ 128 mm, ↓ 182 mm
- 🔊 ↗ 87 mm, ↔ 87 mm, ↓ 230 mm



MD2098-3BL – pendant lamp BLACK

- 💡 3*E14 40W NOT INCLUDED
- ▲ ↗ 420 mm, ↔ 420 mm, ↓ 1400 mm
- 🔊 ↗ 167 mm, ↔ 167 mm, ↓ 172 mm
- 🔊 ↗ 128 mm, ↔ 128 mm, ↓ 182 mm
- 🔊 ↗ 87 mm, ↔ 87 mm, ↓ 230 mm

WHITE OR BLACK SHINY GLASS | MUTE SILVER |
STAINLESS STEEL SHEET



Monaco

MD1106-1L SILVER – pendant lamp

- 💡 1*E27 60W NOT INCLUDED
- ▲ Ø450 mm, ↓ 1200 mm
- 🔊 Ø450 mm, ↓ 280 mm

MD1106-3S SILVER – pendant lamp

- 💡 3*G9 40W NOT INCLUDED
- ▲ ↗ 160 mm, ↔ 700 mm, ↓ 1200 mm
- 🔊 Ø160 mm, ↓ 115 mm

MB1106-1S SILVER – wall lamp

- 💡 1*G9 40W NOT INCLUDED
- ▲ ↗ 160 mm, ↔ 210 mm, ↓ 250 mm
- 🔊 Ø160 mm, ↓ 115 mm



SILVER ALUMINIUM WIRE SHADE | OPAL GLASS INSIDE

Moon



MD1105-1L BLACK – pendant lamp

💡 1*E27 60W NOT INCLUDED
⚙️ Ø500 mm, ⬆️ 1200 mm



MD1105-1L SILVER – pendant lamp

💡 1*E27 60W NOT INCLUDED
⚙️ Ø500 mm, ⬆️ 1200 mm



BLACK OR SILVER | ALUMINIUM WIRE SHADE |
OPAL GLASS INSIDE

Musca

MD2131-1W – pendant lamp

💡 1*E27 40W NOT INCLUDED
⚙️ ⬆️ 380 mm, ↔ 380 mm, ⬆️ 1200 mm



SHINY WHITE GLASS | STAINLESS STEEL SHEET | CHROME

Parthenon



C0277-05S-F4AC – ceiling lamp

💡 5*G9 42W INCLUDED
▲ Ø360 mm, ↓ 150 mm
⬇️ Ø360 mm, ↓ 150 mm

C0277-06M-F4AC

💡 6*G9 42W INCLUDED
▲ Ø450 mm, ↓ 150 mm
⬇️ Ø450 mm, ↓ 150 mm



C0277-09L-F4AC – ceiling lamp

💡 9*G9 42W INCLUDED
▲ Ø540 mm, ↓ 150 mm
⬇️ Ø540 mm, ↓ 150 mm



P0277-06M-F4AC – pendant lamp

💡 6*G9 42W INCLUDED
▲ Ø450 mm, ↓ 1380 mm
⬇️ Ø450 mm, ↓ 140 mm

P0277-09L-F4AC

💡 9*G9 42W INCLUDED
▲ Ø540 mm, ↓ 1380 mm
⬇️ Ø540 mm, ↓ 140 mm



P0277-09X-F4AC – pendant lamp

💡 9*G9 42W INCLUDED
▲ Ø600 mm, ↓ 1380 mm
⬇️ Ø600 mm, ↓ 140 mm



K9 CLEAR CRYSTAL | CHROME

Pasion

1940 – pendant lamp

💡 6* E27/13W NOT INCLUDED
▲ ↗ 160 mm, ↔ 1100 mm, ↓ 300-1500 mm
⬇️ ↗ 160 mm, ↔ 1100 mm, ↓ 270 mm

1943 – wall lamp

💡 2* E27/13W NOT INCLUDED
▲ ↗ 110 mm, ↔ 140 mm, ↓ 370 mm
⬇️ ↗ 110 mm, ↔ 140 mm, ↓ 370 mm

1947 – ceiling lamp

💡 4* E27/13W NOT INCLUDED
▲ ↗ 200 mm, ↔ 700 mm, ↓ 220 mm
⬇️ ↗ 200 mm, ↔ 700 mm, ↓ 220 mm



WHITE LACQUER | ALUMINIUM

Pasion



1950 – pendant lamp

- 6* E27/13W NOT INCLUDED
- ▲ 160 mm, ↔ 1100 mm, ↓ 300-1500 mm
- ▲ 160 mm, ↔ 1100 mm, ↓ 270 mm



1953 – wall lamp

- 2* E27/13W NOT INCLUDED
- ▲ 110 mm, ↔ 140 mm, ↓ 370 mm
- ▲ 110 mm, ↔ 140 mm, ↓ 370 mm



1957 – ceiling lamp

- 4* E27/13W NOT INCLUDED
- ▲ 200 mm, ↔ 700 mm, ↓ 220 mm
- ▲ 200 mm, ↔ 700 mm, ↓ 220 mm

BLACK LACQUER | ALUMINIUM



Pavo

MC2123-3BL

– ceiling lamp

- 3*E27 40W NOT INCLUDED
- ▲ Ø480 mm, ↓ 190 mm | Ø600 mm, ↓ 230 mm
- ▲ Ø480 mm, ↓ 170 mm | Ø600 mm, ↓ 210 mm

MC2123-3W

– ceiling lamp

- 3*E27 40W NOT INCLUDED
- ▲ Ø480 mm, ↓ 190 mm | Ø600 mm, ↓ 230 mm
- ▲ Ø480 mm, ↓ 170 mm | Ø600 mm, ↓ 210 mm

MD2123-3W

– pendant lamp

- 3*E27 40W NOT INCLUDED
- ▲ Ø480 mm, ↓ 1200 mm | Ø600 mm, ↓ 1200 mm
- ▲ Ø480 mm, ↓ 170 mm | Ø600 mm, ↓ 210 mm

MD2123-3BL

– pendant lamp

- 3*E27 40W NOT INCLUDED
- ▲ Ø480 mm, ↓ 1200 mm | Ø600 mm, ↓ 1200 mm
- ▲ Ø480 mm, ↓ 170 mm | Ø600 mm, ↓ 210 mm

MC2125-3BL

– ceiling lamp

- 3*E27 40W NOT INCLUDED
- ▲ Ø480 mm, ↓ 190 mm | Ø600 mm, ↓ 230 mm
- ▲ Ø480 mm, ↓ 170 mm | Ø600 mm, ↓ 210 mm

MC2125-3W

– ceiling lamp

- 3*E27 40W NOT INCLUDED
- ▲ Ø480 mm, ↓ 190 mm | Ø600 mm, ↓ 230 mm
- ▲ Ø480 mm, ↓ 170 mm | Ø600 mm, ↓ 210 mm

MD2125-3W

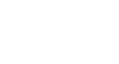
– pendant lamp

- 3*E27 40W NOT INCLUDED
- ▲ Ø480 mm, ↓ 1200 mm | Ø600 mm, ↓ 1200 mm
- ▲ Ø480 mm, ↓ 170 mm | Ø600 mm, ↓ 210 mm

MD2125-3BL

– pendant lamp

- 3*E27 40W NOT INCLUDED
- ▲ Ø480 mm, ↓ 1200 mm | Ø600 mm, ↓ 1200 mm
- ▲ Ø480 mm, ↓ 170 mm | Ø600 mm, ↓ 210 mm



ALUMINIUM | HIGHLIGHT BLACK OR WHITE LACQUER

Perle



P0226-01A – pendant lamp

💡 1*G4 35W MAX INCLUDED
 ▲ Ø120 mm, ↓ 1360 mm
 📏 Ø116 mm, ↓ 193 mm



P0226-03B – pendant lamp

💡 3*G4 35W MAX INCLUDED
 ▲ Ø330 mm, ↓ 1330 mm
 📏 Ø116 mm, ↓ 193 mm



P0226-05B – pendant lamp

💡 5*G4 20W MAX INCLUDED
 ▲ Ø410 mm, ↓ 1330 mm
 📏 Ø116 mm, ↓ 193 mm



CHROME | CLEAR BOROSILICATE GLASS WITH K9 CRYSTAL



Perle

P0226-04H – pendant lamp

💡 4*G4 42W MAX INCLUDED
 ▲ ⤴ 120 mm, ↔ 710 mm, ↓ 1340 mm
 📏 Ø116 mm, ↓ 193 mm



P0226-04S – pendant lamp

💡 4*G4 42W MAX INCLUDED
 ▲ ⤴ 320 mm, ↔ 320 mm, ↓ 1340 mm
 📏 Ø116 mm, ↓ 193 mm



W0226-01A – wall lamp

💡 1*G4 35W MAX INCLUDED
 ▲ ⤴ 250 mm, ↔ 120 mm, ↓ 510 mm
 📏 Ø116 mm, ↓ 193 mm



MIRROR STAINLESS STEEL | CHROME | CLEAR BOROSILICATE GLASS
 WITH K9 CRYSTAL

Pico



MD9023-1L SILVER – pendant lamp

- 💡 1*E27 60W NOT INCLUDED
- ⬆️ Ø300 mm, ⬆️ 1200 mm
- ⬆️ Ø300 mm, ⬆️ 280 mm



MD9023-1L BLACK – pendant lamp

- 💡 1*E27 60W NOT INCLUDED
- ⬆️ Ø300 mm, ⬆️ 1200 mm
- ⬆️ Ø300 mm, ⬆️ 280 mm



SILVER OR BLACK ALUMINIUM WIRE SHADE + OPAL GLASS INSIDE

Pop

0920 – pendant lamp

- 💡 6*E27 13W NOT INCLUDED
- ⬆️ Ø820 mm, ⬆️ 590-820 mm



0922 – pendant lamp

- 💡 3*E27 13W NOT INCLUDED
- ⬆️ Ø760 mm, ⬆️ 240-330 mm



0923 – wall lamp

- 💡 1*E27 13W NOT INCLUDED
- ⬆️ Ø100 mm, ⬆️ 160 mm, ⬆️ 550 mm



WHITE LACQUER | ALUMINIUM | CHROME

Pop



0900 – pendant lamp
 1*E27 13W NOT INCLUDED
 Ø820 mm, ↓ 590-820 mm



0902 – pendant lamp
 1*E27 13W NOT INCLUDED
 Ø760 mm, ↓ 240-330 mm



0903 – wall lamp
 1*E27 13W NOT INCLUDED
 Ø100 mm, ↗ 160 mm, ↓ 550 mm

BLACK LACQUER | ALUMINIUM | CHROME



Rea

YP405 – table lamp BLACK
 1*E27 40W MAX NO INCLUDED
 Ø360 mm, ↓ 630 mm
 Ø360 mm, ↓ 200 mm

YP405L – table lamp WHITE
 1*E27 40W MAX NO INCLUDED
 Ø380 mm, ↓ 670 mm
 Ø380 mm, ↓ 230 mm



BLACK OR WHITE SHADE | STEEL AND CRYSTAL BODY



Quadrate



4076 – table lamp

- 💡 1*E27 60W NOT INCLUDED
- ⬆️ ⬆️ 180 mm, ↔ 345 mm, ⬆️ 530 mm
- 🔊 ⬆️ 180 mm, ↔ 345 mm, ⬆️ 190 mm

CREAM COTTON SHADE | STAINLESS STEEL POLISHED BODY



Delta 3

4174 – table lamp

- 💡 1*E27 60W NOT INCLUDED
- ⬆️ ⬆️ 250 mm, ↔ 420 mm, ⬆️ 612 mm
- 🔊 ⬆️ 250 mm, ↔ 420 mm, ⬆️ 200 mm



CREAM COTTON SHADE | STAINLESS STEEL POLISHED BODY

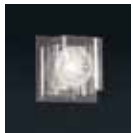
Sereno



T0185-01E-F4QL – table lamp
 ⚡ 1*G9 40W MAX INCLUDED
 ▲ ↗ 130 mm, ↔ 130 mm, ↓ 340 mm
 ♣ ↔ 120 mm, ↓ 120 mm



F0185-03E-F4QL – floor lamp
 ⚡ 3*G9 40W MAX INCLUDED
 ▲ ↔ 220 mm, ↓ 1510 mm
 ♣ ↔ 120 mm, ↓ 120 mm

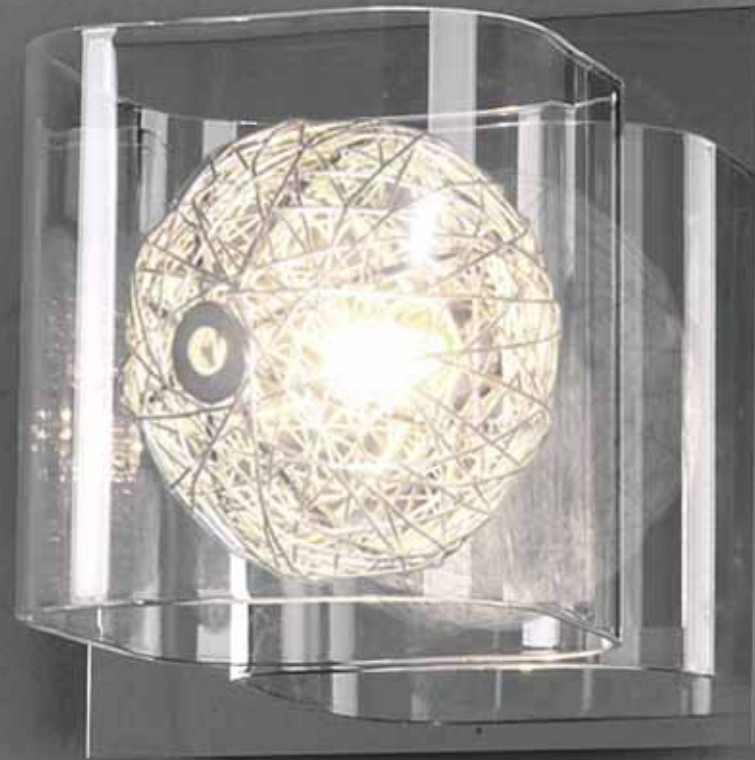


W0185-01E-B5QL – wall lamp
 ⚡ 1*G9 40W MAX INCLUDED
 ▲ ↔ 160 mm, ↓ 160 mm
 ♣ ↔ 120 mm, ↓ 120 mm



P0185-04E-F4QL – pendant lamp
 ⚡ 4*G9 40W MAX INCLUDED
 ▲ ↔ 980 mm, ↓ 1390 mm
 ♣ ↔ 120 mm, ↓ 120 mm

MIRROR STAINLESS STEEL | CHROME | GLASS | ALUMINIUM BALL



Sereno

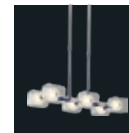
C0185-04H-B5QL – ceiling lamp
 ⚡ 4*G9 40W MAX INCLUDED
 ▲ ↗ 420 mm, ↔ 420 mm, ↓ 150 mm
 ♣ ↔ 120 mm, ↓ 120 mm



P0185-06E-F4QL – pendant lamp
 ⚡ 6*G9 40W MAX INCLUDED
 ▲ ↔ 600 mm, ↓ 1400 mm
 ♣ ↔ 120 mm, ↓ 120 mm



P0185-06H-F4QL – pendant lamp
 ⚡ 6*G9 40W MAX INCLUDED
 ▲ ↗ 290 mm, ↔ 700 mm, ↓ 400-600 mm
 ♣ ↔ 120 mm, ↓ 120 mm



C0185-06E-F4QL – ceiling lamp
 ⚡ 6*G9 40W MAX INCLUDED
 ▲ Ø570 mm, ↓ 170 mm
 ♣ ↔ 120 mm, ↓ 120 mm



MIRROR STAINLESS STEEL | CHROME | GLASS | ALUMINIUM BALL

Simple



1380 – wall lamp

- 💡 LED 1*3W INCLUDED
- ▲ Ø110 mm, ↓ 220 mm
- 🔊 ↗ 210 mm, ↔ 140 mm, ↓ 145 mm

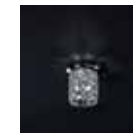
STAINLESS STEEL POLISHED



Souffle

C0266-01R-F4AC – ceiling lamp

- 💡 1*G9 53W INCLUDED
- ▲ Ø120 mm, ↓ 120 mm
- 🔊 Ø120 mm, ↓ 120 mm



C0266-04S-B5AC – ceiling lamp

- 💡 4*G9 53W INCLUDED
- ▲ ↗ 380 mm, ↔ 380 mm, ↓ 120 mm
- 🔊 Ø100 mm, ↓ 120 mm



P0266-01A-F4AC – pendant lamp

- 💡 1* G9 53W INCLUDED
- ▲ Ø100 mm, ↓ 1420 mm
- 🔊 Ø100 mm, ↓ 200 mm



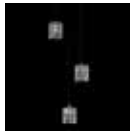
P0266-01S-F4AC – pendant lamp

- 💡 1* G9 53W INCLUDED
- ▲ Ø100 mm, ↓ 1380 mm
- 🔊 Ø100 mm, ↓ 130 mm



K9 CLEAR CRYSTAL, MIRROR STAINLESS STEEL

Souffle



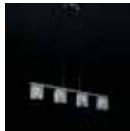
P0266-03B-F4AC – pendant lamp

💡 3*G4 35W INCLUDED
 ▲ Ø310 mm, ↓ 1360 mm
 📏 Ø100 mm, ↓ 120 mm



P0266-05B-F4AC – pendant lamp

💡 5*G4 35W INCLUDED
 ▲ Ø390 mm, ↓ 1350 mm
 📏 Ø100 mm, ↓ 120 mm



P0266-04H-F4AC – pendant lamp

💡 4*G4 35W INCLUDED
 ▲ ⚡ 100 mm, ↔ 700 mm, ↓ 1350 mm
 📏 Ø100 mm, ↓ 120 mm



P0266-04D-F4AC – pendant lamp

💡 4*G4 35W INCLUDED
 ▲ ⚡ 100 mm, ↔ 800 mm, ↓ 1350 mm
 📏 Ø100 mm, ↓ 120 mm



T0266-01A-F4AC – table lamp

💡 1*G9 53W INCLUDED
 ▲ Ø110 mm, ↓ 270 mm
 📏 Ø100 mm, ↓ 120 mm

K9 CLEAR CRYSTAL | MIRROR STAINLESS STEEL | CHROME



Souffle

W0266-01E-B5AC – wall lamp

💡 1*G9 53W INCLUDED
 ▲ ⚡ 90 mm, ↔ 180 mm, ↓ 220 mm
 📏 ⚡ 90 mm, ↔ 180 mm, ↓ 220 mm



W0266-01B-F4AC – wall lamp

💡 1*G9 53W INCLUDED
 ▲ ⚡ 140 mm, ↔ 120 mm, ↓ 260 mm
 📏 Ø120 mm, ↓ 260 mm



W0266-01S-B5AC – wall lamp

💡 1*G9 53W INCLUDED
 ▲ ⚡ 130 mm, ↔ 104 mm, ↓ 130 mm
 📏 Ø130 mm, ↓ 130 mm



W0266-01C-B5AC – wall lamp

💡 1*G9 53W INCLUDED
 ▲ ⚡ 120 mm, ↔ 125 mm, ↓ 120 mm
 📏 Ø110 mm, ↓ 110 mm



K9 CLEAR CRYSTAL, MIRROR STAINLESS STEEL

Spirit



MD2102-1W – pendant lamp WHITE

- 💡 1*E14 40W NOT INCLUDED
- ▲ Ø167 mm, ↓ 1200 mm
- 🔊 Ø167 mm, ↓ 172 mm



MD2102-1BL – pendant lamp BLACK

- 💡 1*E14 40W NOT INCLUDED
- ▲ Ø167 mm, ↓ 1200 mm
- 🔊 Ø167 mm, ↓ 172 mm



MD2102B-3W – pendant lamp WHITE

- 💡 3*E14 40W NOT INCLUDED
- ▲ ↔ 847 mm, ↓ 1200 mm
- 🔊 Ø167 mm, ↓ 172 mm



MD2102B-3BL – pendant lamp BLACK

- 💡 3*E14 40W NOT INCLUDED
- ▲ ↔ 847 mm, ↓ 1200 mm
- 🔊 Ø167 mm, ↓ 172 mm



SHINY WHITE OR BLACK GLASS | CHROME



Spirit



MD2102A-3W – pendant lamp WHITE

- 💡 3*E14 40W NOT INCLUDED
- ▲ Ø500 mm, ↓ 2000 mm
- 🔊 Ø167 mm, ↓ 172 mm



MD2102A-3BL – pendant lamp BLACK

- 💡 3*E14 40W NOT INCLUDED
- ▲ Ø500 mm, ↓ 2000 mm
- 🔊 Ø167 mm, ↓ 172 mm



MD2102A-5W – pendant lamp WHITE

- 💡 5*E14 40W NOT INCLUDED
- ▲ Ø500 mm, ↓ 2400 mm
- 🔊 Ø167 mm, ↓ 172 mm



MD2102A-5BL – pendant lamp BLACK

- 💡 5*E14 40W NOT INCLUDED
- ▲ Ø500 mm, ↓ 2400 mm
- 🔊 Ø167 mm, ↓ 172 mm

SHINY WHITE OR BLACK GLASS | CHROME



Sydney



3358 – pendant lamp

- 💡 3*E14 40W NOT INCLUDED
- ⬆️ Ø610 mm, ⬆️ 230 mm
- 🔊 Ø180 mm, ⬆️ 130 mm



3359 – pendant lamp

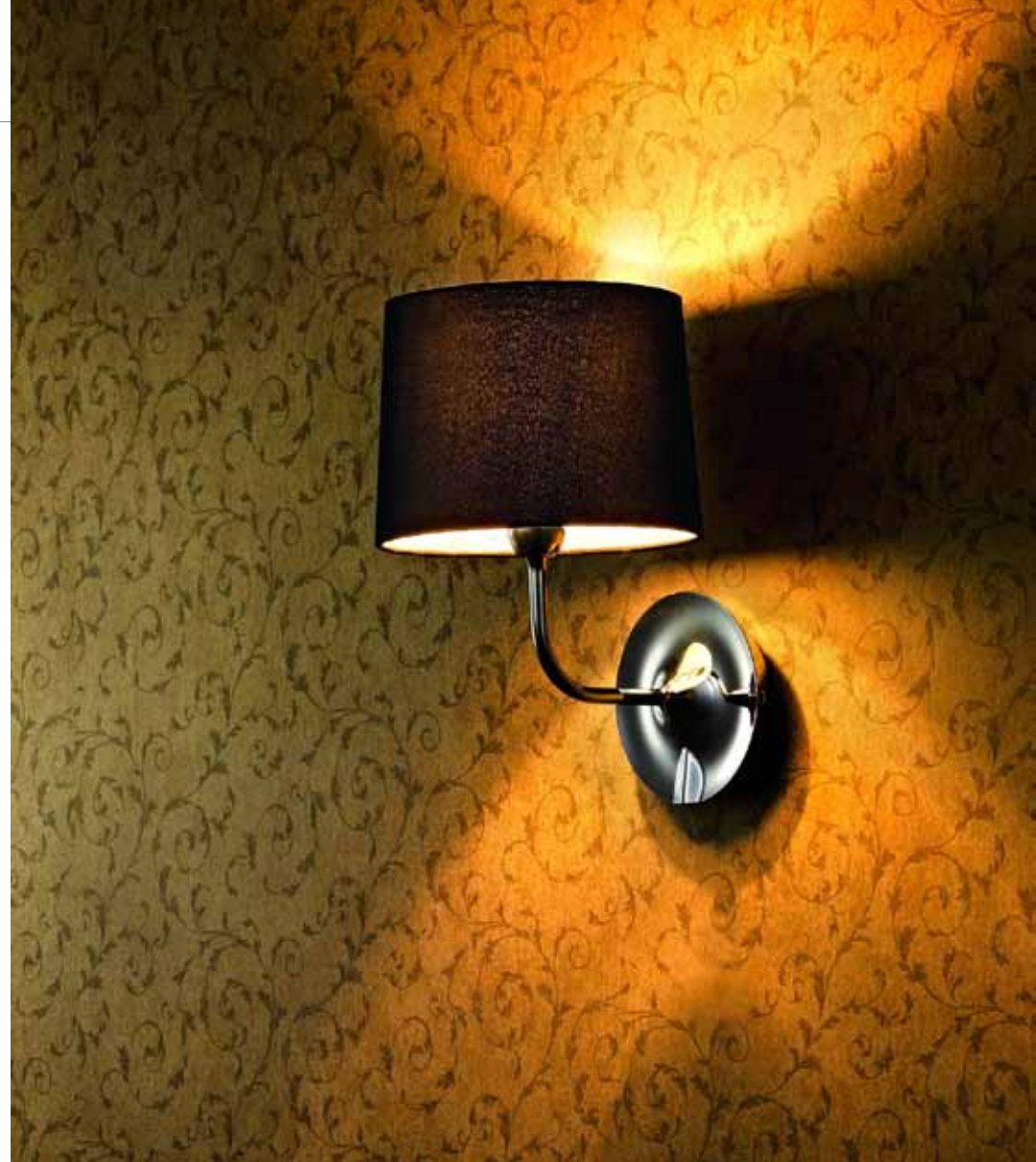
- 💡 5*E14 40W NOT INCLUDED
- ⬆️ Ø700 mm, ⬆️ 230 mm
- 🔊 Ø180 mm, ⬆️ 130 mm



1357 – wall lamp

- 💡 1*E14 40W NOT INCLUDED
- ⬆️ 220 mm, ↔ 180 mm, ⬆️ 274 mm
- 🔊 Ø180 mm, ⬆️ 130 mm

BLACK SHADE | STAINLESS STEEL POLISHED BODY



Tango

MX1104-2 SILVER – ceiling lamp

- 💡 2*E27 60W NOT INCLUDED
- ⬆️ Ø400 mm, ⬆️ 190 mm
- 🔊 Ø400 mm, ⬆️ 170 mm



MX1104-2 BLACK – ceiling lamp

- 💡 2*E27 60W NOT INCLUDED
- ⬆️ Ø400 mm, ⬆️ 190 mm
- 🔊 Ø400 mm, ⬆️ 170 mm



MD1104-2 SILVER – pendant lamp

- 💡 2*E27 60W NOT INCLUDED
- ⬆️ Ø400 mm, ⬆️ 1200 mm
- 🔊 Ø400 mm, ⬆️ 170 mm



MD1104-2 BLACK – pendant lamp

- 💡 2*E27 60W NOT INCLUDED
- ⬆️ Ø400 mm, ⬆️ 1200 mm
- 🔊 Ø400 mm, ⬆️ 170 mm



ML1104-2 SILVER – floor lamp

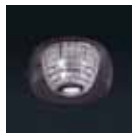
- 💡 2*E27 60W NOT INCLUDED
- ⬆️ Ø400 mm, ⬆️ 1620 mm
- 🔊 Ø400 mm, ⬆️ 170 mm



SILVER OR BLACK ALUMINIUM WIRE SHADE WITH
OPAL GLASS INSIDE



Tenda



C0224-03S – ceiling lamp

💡 3*G9 42W MAX INCLUDED
 ▲ Ø280 mm, ↓ 138 mm
 ▲ Ø280 mm, ↓ 138 mm



P0224-05M – pendant lamp

💡 5*G9 42W MAX INCLUDED
 ▲ Ø400 mm, ↓ 1470 mm
 ▲ Ø400 mm, ↓ 210 mm



BOROSILICATE GLASS WITH CLEAR CRYSTAL | CHROME

Thea



C0269-03A-F4AC – ceiling lamp CLEAR

💡 3*G9 53W INCLUDED
 ▲ Ø390 mm, ↓ 160 mm
 ▲ Ø390 mm, ↓ 160 mm

C0269-05C-F4AC

5*G9 53W INCLUDED
 Ø530 mm, ↓ 210 mm
 Ø530 mm, ↓ 210 mm

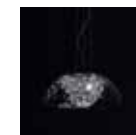


P0269-03A-F4AC – pendant lamp CLEAR

💡 3*G9 53W INCLUDED
 ▲ Ø390 mm, ↓ 1400 mm
 ▲ Ø390 mm, ↓ 160 mm

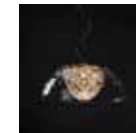
P0269-05C-F4AC

5*G9 53W INCLUDED
 Ø530 mm, ↓ 1430 mm
 Ø530 mm, ↓ 210 mm



P0269-05C-K4AC – pendant lamp CLEAR/ GOLD

💡 5*G9 42W INCLUDED
 ▲ Ø530 mm, ↓ 1430 mm
 ▲ Ø530 mm, ↓ 210 mm



C0269-03S-F4AC – ceiling lamp OPAL

💡 3*G9 53W INCLUDED
 ▲ Ø390 mm, ↓ 160 mm
 ▲ Ø390 mm, ↓ 160 mm

C0269-05L-F4AC

5*G9 53W INCLUDED
 Ø530 mm, ↓ 210 mm
 Ø530 mm, ↓ 210 mm



P0269-03A-F4AC – pendant lamp OPAL

💡 3*G9 42W INCLUDED
 ▲ Ø390 mm, ↓ 1400 mm
 ▲ Ø390 mm, ↓ 160 mm

P0269-05C-F4AC

5*G9 42W INCLUDED
 Ø530 mm, ↓ 1430 mm
 Ø530 mm, ↓ 210 mm



CLEAR SODALIME MOUTH BLOWN GLASS WITH K9 CLEAR CRYSTAL |
 CHROME | MMS | GILDED STEEL

Tiara



W0221-01S – wall lamp CLEAR

- 💡 1*G9 42W MAX INCLUDED
- ⬆️ ↗️ 140 mm, ↔ 250 mm, ⬇️ 290 mm
- 🔊 ↗️ 140 mm, ↔ 250 mm, ⬇️ 290 mm



W0221-01M – wall lamp CLEAR

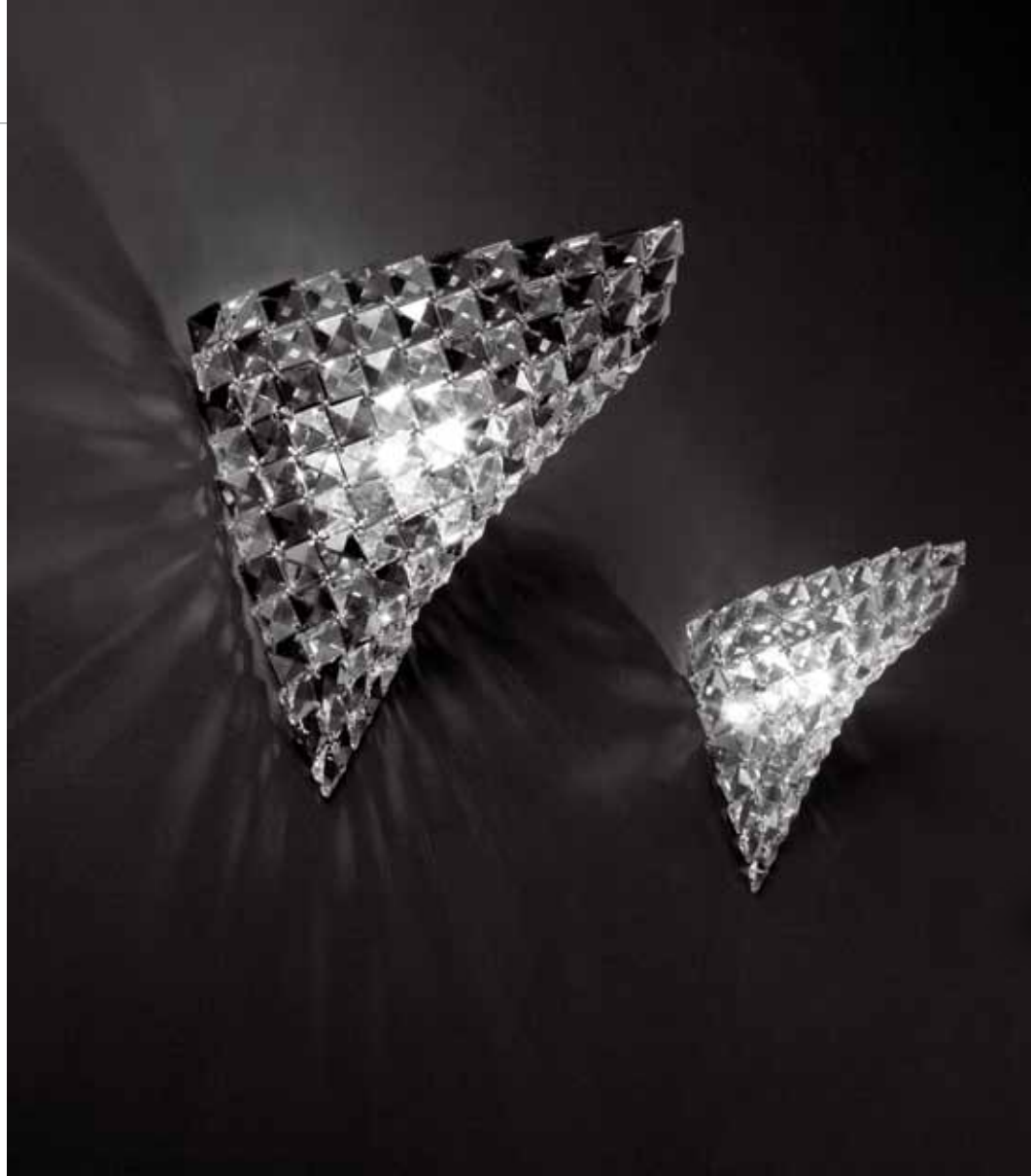
- 💡 1*G9 42W MAX INCLUDED
- ⬆️ ↗️ 220 mm, ↔ 300 mm, ⬇️ 360 mm
- 🔊 ↗️ 220 mm, ↔ 300 mm, ⬇️ 360 mm



W0221-01M-F4RL - wall lamp CLEAR

- 💡 1*G9 42W MAX INCLUDED
- ⬆️ ↗️ 220 mm, ↔ 300 mm, ⬇️ 360 mm
- 🔊 ↗️ 220 mm, ↔ 300 mm, ⬇️ 360 mm

CHROMED STEEL | K9 CLEAR AND SMOKY CRYSTALS



Tiara



P0221-08M-F4AC – pendant lamp CLEAR

- 💡 8*G9 42W MAX INCLUDED
- ⬆️ ↗️ 560 mm, ↔ 560 mm, ⬇️ 1320 mm
- 🔊 ↗️ 560 mm, ↔ 560 mm, ⬇️ 125 mm



P0221-08M-F4RL – pendant lamp SMOKY

- 💡 8*G9 42W MAX INCLUDED
- ⬆️ ↗️ 560 mm, ↔ 560 mm, ⬇️ 1320 mm
- 🔊 ↗️ 560 mm, ↔ 560 mm, ⬇️ 125 mm



C0221-05M-F4AC – ceiling lamp CLEAR

- 💡 5*G9 42W MAX INCLUDED
- ⬆️ ↗️ 560 mm, ↔ 560 mm, ⬇️ 150 mm
- 🔊 ↗️ 560 mm, ↔ 560 mm, ⬇️ 150 mm



C0221-04S-F4AC – wall lamp CLEAR

- 💡 4*G9 42W MAX INCLUDED
- ⬆️ ↗️ 440 mm, ↔ 440 mm, ⬇️ 120 mm
- 🔊 ↗️ 440 mm, ↔ 440 mm, ⬇️ 120 mm



CHROMED STEEL | K9 CLEAR AND SMOKY CRYSTALS



Tripod



4318 +6023 – table lamp BLACK

- 💡 1*E27 60W NOT INCLUDED
- ▲ Ø360 mm, ↓ 550 mm
- 📏 Ø360 mm, ↓ 190 mm



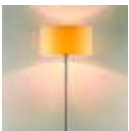
4318-C – table lamp CREAM

- 💡 1*E27 60W NOT INCLUDED
- ▲ Ø360 mm, ↓ 550 mm
- 📏 Ø360 mm, ↓ 190 mm



5319+6026 – floor lamp BLACK

- 💡 1*E27 60W NOT INCLUDED
- ▲ Ø450 mm, ↓ 1595 mm
- 📏 Ø450 mm, ↓ 250 mm



5319-C – floor lamp CREAM

- 💡 1*E27 60W NOT INCLUDED
- ▲ Ø450 mm, ↓ 1595 mm
- 📏 Ø450 mm, ↓ 250 mm

BLACK OR CREAM SHADE | STAINLESS STEEL BODY



Tucana

MJ623-1W – floor lamp WHITE

- 💡 1*E27 40W NOT INCLUDED
- ▲ ↗ 1955 mm, ↔ 425 mm, ↓ 1720 mm
- 📏 ↗ 370 mm, ↔ 370 mm, ↓ 250 mm

MJ623-1BL – floor lamp BLACK

- 💡 1*E27 40W NOT INCLUDED
- ▲ ↗ 1955 mm, ↔ 425 mm, ↓ 1720 mm
- 📏 ↗ 370 mm, ↔ 370 mm, ↓ 250 mm



WHITE OR BLACK SHADE | WOODEN BASE | ALUMINIUM



Virgo



MD6631-1GL – pendant lamp GOLD

1*E27 40W NOT INCLUDED
 ↗ 470 mm, ↔ 470 mm, ↓ 1200 mm
 ↗ 470 mm, ↔ 470 mm, ↓ 230 mm



MD6631-1SL – pendant lamp SILVER

1*E27 40W NOT INCLUDED
 ↗ 470 mm, ↔ 470 mm, ↓ 1200 mm
 ↗ 470 mm, ↔ 470 mm, ↓ 230 mm

GLASS | GOLDEN OR SILVER FOIL | CHROME



Waterfal

W0228-01A-F4AA – wall lamp

💡 1*G9 53W INCLUDED
🔔 ↗ 120 mm, ↔ 120 mm, ⬆ 400 mm
🔔 ↔ 120 mm, ⬆ 200 mm



W0228-01B-F4AA – wall lamp

💡 1*G9 53W INCLUDED
🔔 ↗ 110 mm, ↔ 120 mm, ⬆ 200 mm
🔔 ↔ 110 mm, ⬆ 200 mm



W0228-01D-F4AA – wall lamp

💡 1*G9 53W INCLUDED
🔔 ↗ 120 mm, ↔ 120 mm, ↓ 400 mm
🔔 ↔ 120 mm, ↓ 400 mm



MOUTH BLOWN OPAL GLASS WITH K9 CLEAR CRYSTAL | CHROME

Windsor



1420 – wall lamp

💡 1*E14 40W NOT INCLUDED
⚙️ ↗ 180 mm, ↔ 226 mm, ↓ 213 mm
🔊 Ø180 mm, ↓ 130 mm



4422 – table lamp

💡 1*E27 60W NOT INCLUDED
⚙️ ↗ 300 mm, ↔ 346 mm, ↓ 660 mm
🔊 Ø300 mm, ↓ 180 mm



5423 – floor lamp

💡 1*E27 60W NOT INCLUDED
⚙️ ↗ 400 mm, ↔ 462 mm, ↓ 1610 mm
🔊 Ø400 mm, ↓ 200 mm



3424 – pendant lamp

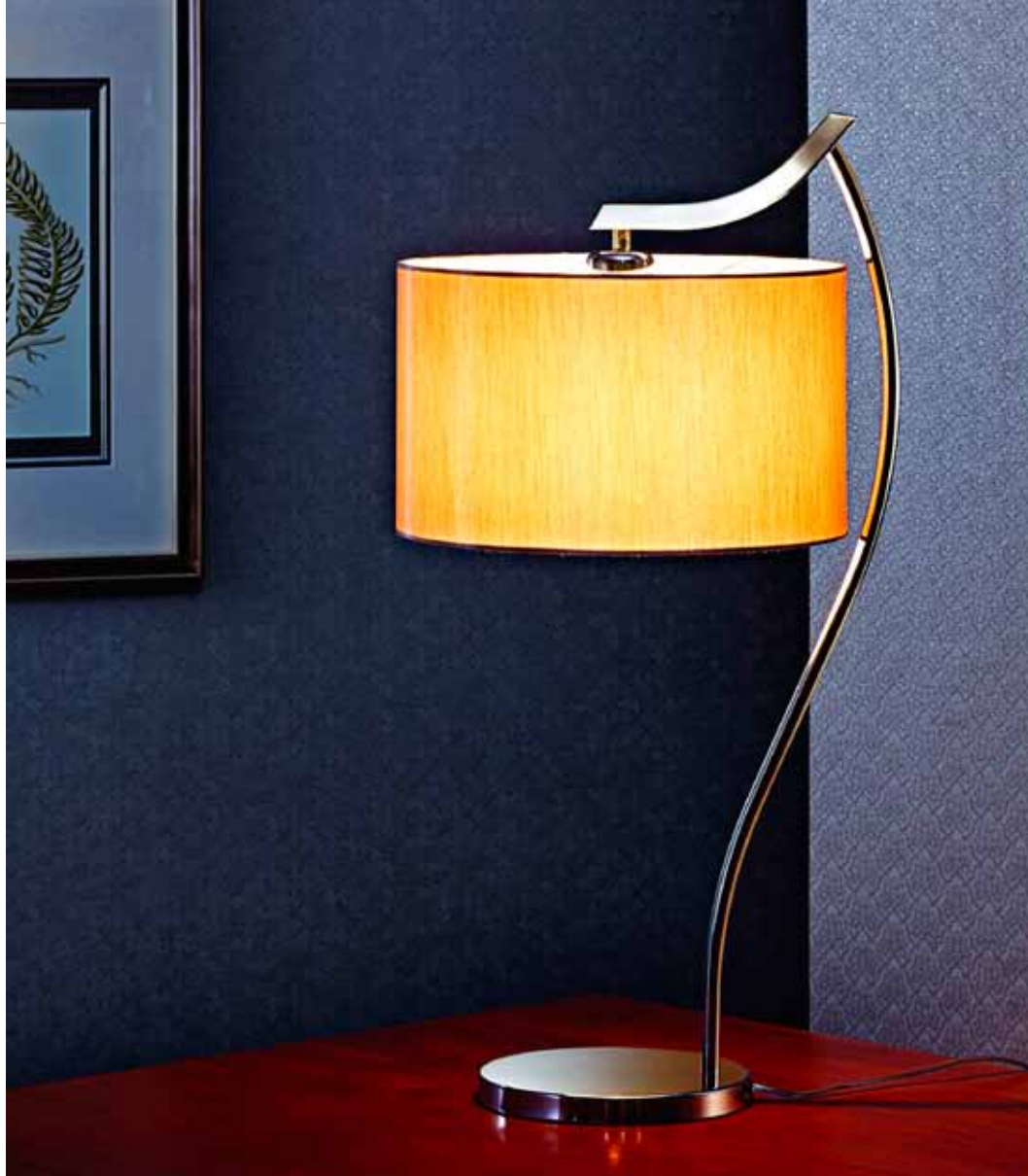
💡 3*E14 40W NOT INCLUDED
⚙️ Ø625 mm, ↓ 840 mm
🔊 Ø180 mm, ↓ 130 mm



3425 – pendant lamp

💡 5*E14 40W NOT INCLUDED
⚙️ Ø720 mm, ↓ 845 mm
🔊 Ø180 mm, ↓ 130 mm

BLACK TC SHADE | STAINLESS STEEL BODY





ZUMA LINE Sp. z o.o.
Katowice, Al. Roździeńskiego 91

PRZEDSTAWICIEL HANDLOWY

Damian Gregorczyk, tel.: +48 785 991 109
damian.gregorczyk@zumaline.pl

DZIAŁ HANDLOWY

Katarzyna Myszor, tel.: +48 515 117 551
k.myszor@zumaline.pl

Adriana Lewandowska, tel.: +48 781 850 010
adriana.lewandowska@zumaline.pl

fax: +48 32 352 39 97
tel.: +48 32 202 56 76 / wew. 103

www.zumaline.com